

Alfholl Guesthouse

The Friendly Elves' House

The supernatural never seems far away in Iceland. As a bonus on your stay at Alfholl, you can learn about the mysterious but friendly creatures that live in rocks and other curious places.



Álfhóll Guesthouse
Ránargata 8
IS-101 Reykjavík
Iceland
Tel +354 898 1838
Fax +354 552 3838
e-mail alf@islandia.is
www.islandia.is/alf



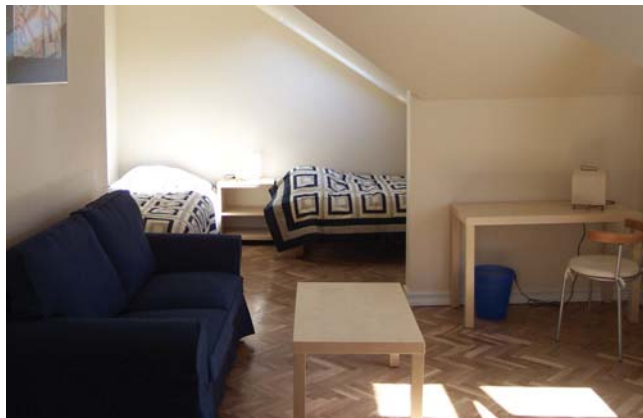
The charming guesthouse Alfholl (Elves' House) invites you to stay in cosy surroundings, only 300 m from Reykjavík city centre.

Welcome

Alfholl Guesthouse has five double rooms, two single rooms and one studio apartment with fully equipped kitchenette. All rooms have a sink and there are bathrooms with shower on each floor.



Guests have access to a fully equipped kitchen and laundry facilities. Good restaurants are within walking distance and it is a ten minute walk to the nearest swimming pool.



Velkomin

Álfhóll býður gistingu í vinalugu umhverfi í nýuppgerðu húsi nálægt miðbæ Reykjavíkur. Í húsinu eru fimm tveggja manna herbergi, tvö eins manns og fullbúin stúdíóbúð.

Í öllum herbergjum er vaskur og rúmgott baðherbergi með sturtu er á hvorri hæð. Gestir hafa aðgang að fullbúnu eldhúsi og þvottaaðstöðu.



www.islandia.is/alf

Willkommen

Alfholl Gasthaus bietet neudekorierte sieben Komfort Zimmer und ein Stüdiowohnung. Auf jeder Etage befindet sich ein Badezimmer mit Dusche. Die Zimmer haben alle Waschgelegenheit. Küche und Wäscherei steht auch zur Verfügung. Álfhóll liegt nur 300 m von Zentrum.